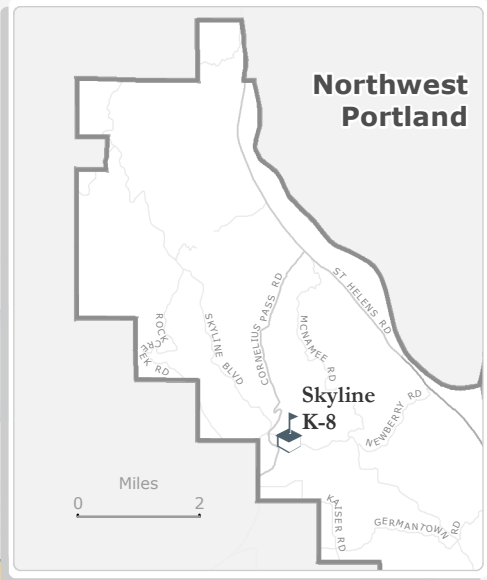
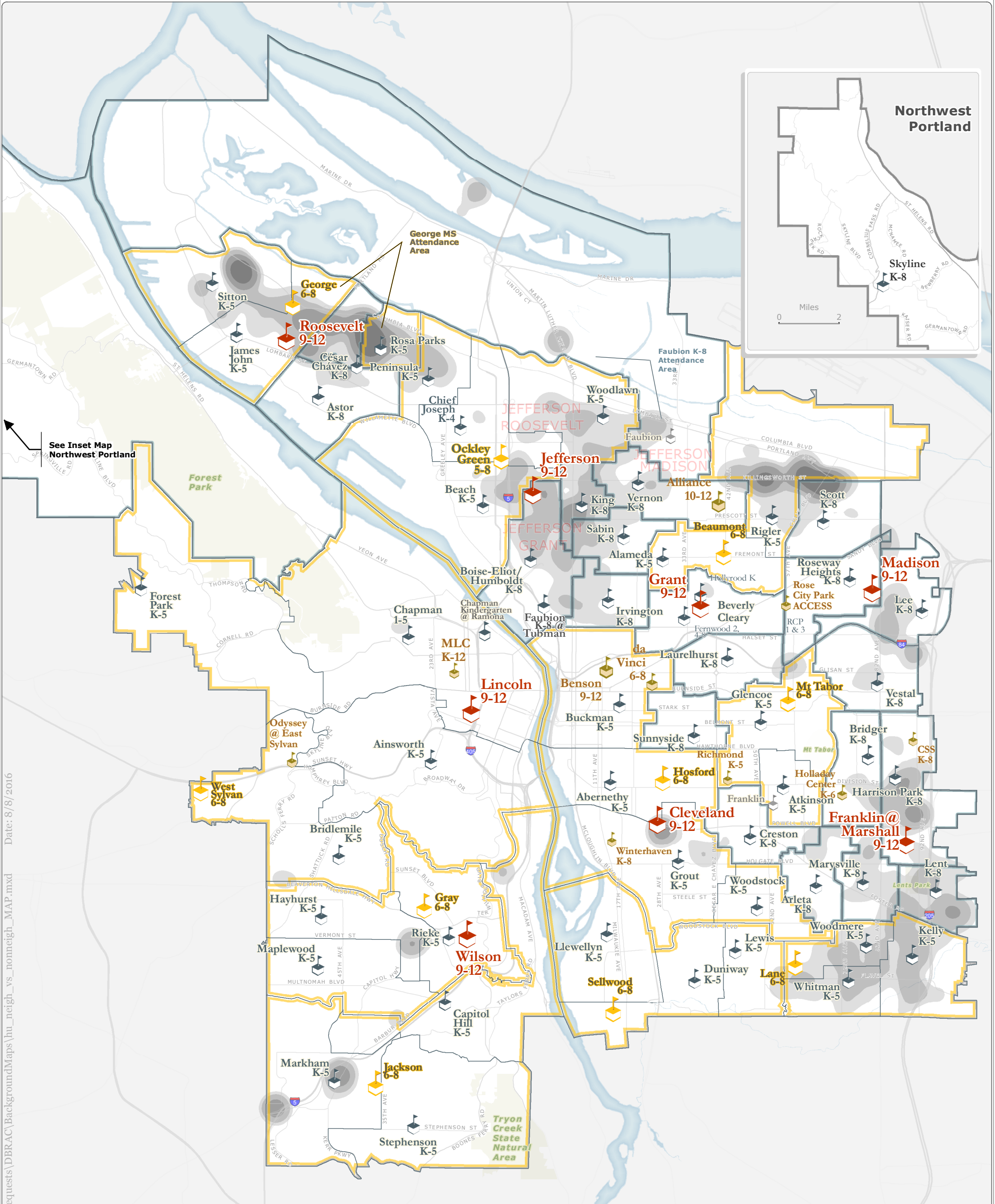




2015-16 Historically Underserved Student Density (Neighborhood Students)



See Inset Map Northwest Portland

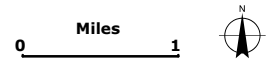
Path: M:\PROJECTS\Projects_2016-17\Map Requests\BackgroundMaps\hu_neigh_vs_nonneigh_MAP.mxd Date: 8/8/2016

Notes

Shaded areas show density of K-12 students who are "captured," or attending neighborhood schools, based on 2015-16 enrollment.

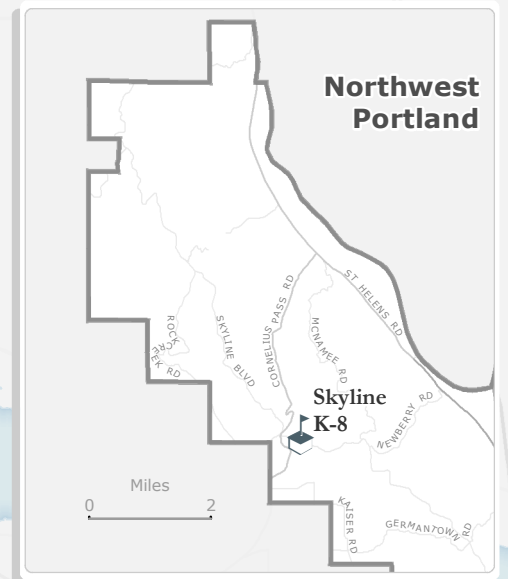
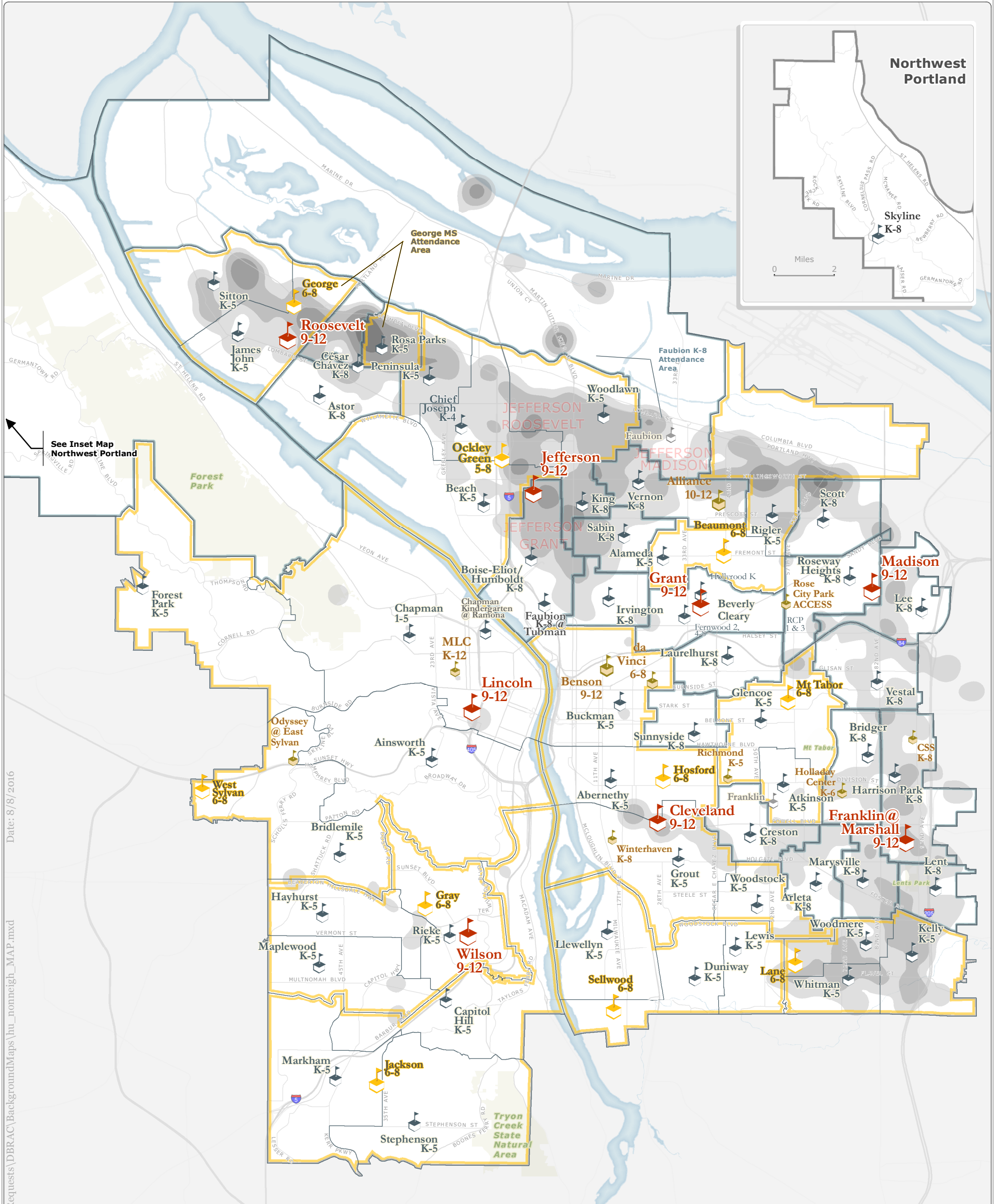
Legend

PPS School Sites	Boundaries	Historically Underserved Student Density	High School Clusters Coded by Color
High School	K-5/K-8	0 - 0.25	
Middle School	K-8 Areas	0.25 - 0.5	
K-5/K-8	MS Areas	0.5 - 1.0	
Special Programs		1.0 - 2.0	
		2.0 - 4.2	





2015-16 Historically Underserved Student Density (Non-Neighborhood Students)



See Inset Map Northwest Portland

Date: 8/8/2016

Path: M:\PROJECTS\Projects_2016-17\Map Requests\DBRAC\BackgroundMaps\hu_nonneigh_MAP.mxd

Notes

Shaded areas show density of K-12 students who are not "captured," meaning they do not attend their neighborhood school. Data is based on 2015-16 enrollment.

Legend

PPS School Sites

- High School
- Middle School
- K-5/K-8
- Special Programs

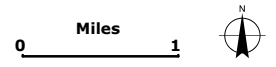
Boundaries

- K-5/K-8
- K-8 Areas
- MS Areas

Historically Underserved Non-Neighborhood Students per Acre

- 0 - 0.1
- 0.1 - 0.25
- 0.25 - 0.6
- 0.6 - 1.5
- 1.5 - 2.7

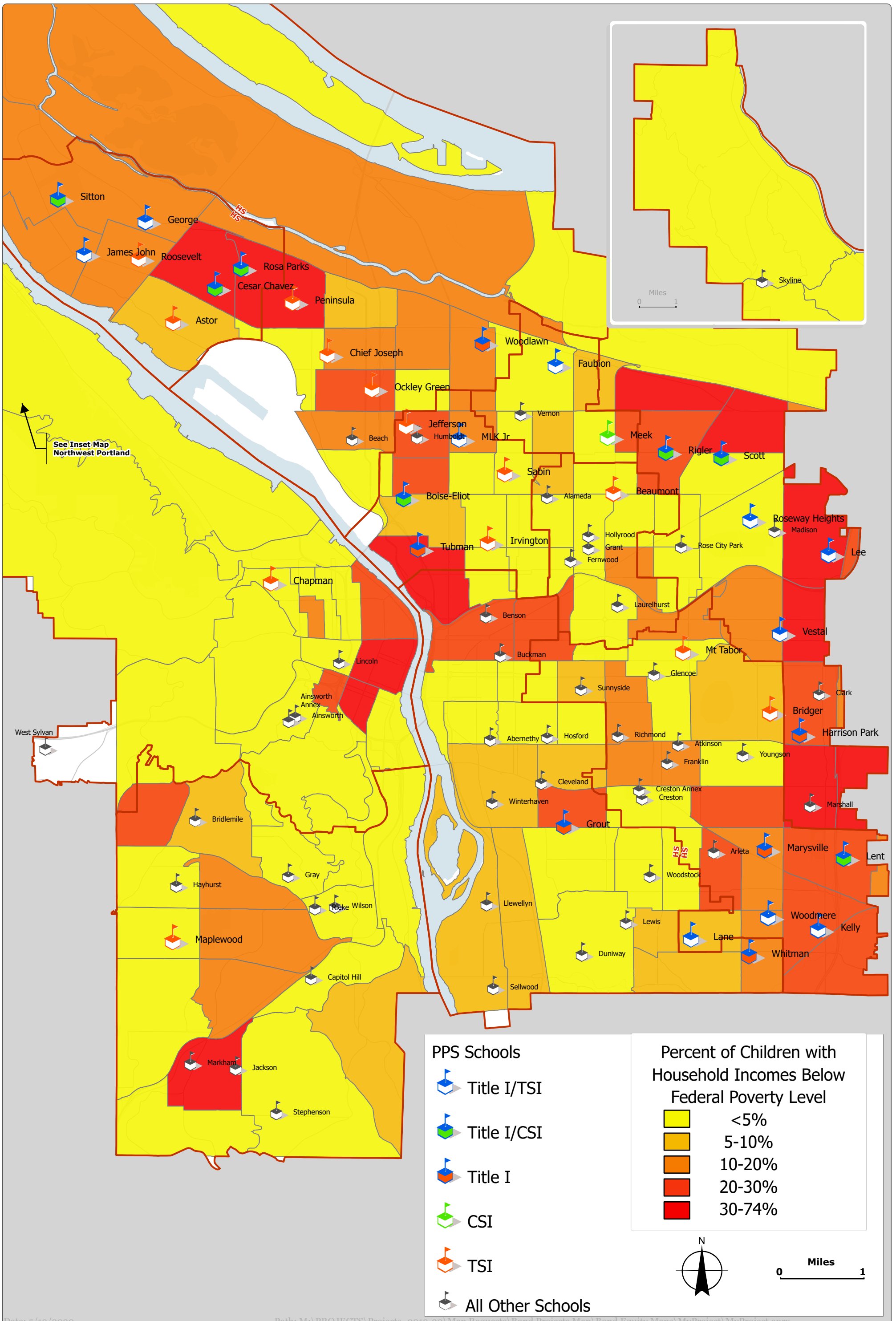
High School Clusters Coded by Color





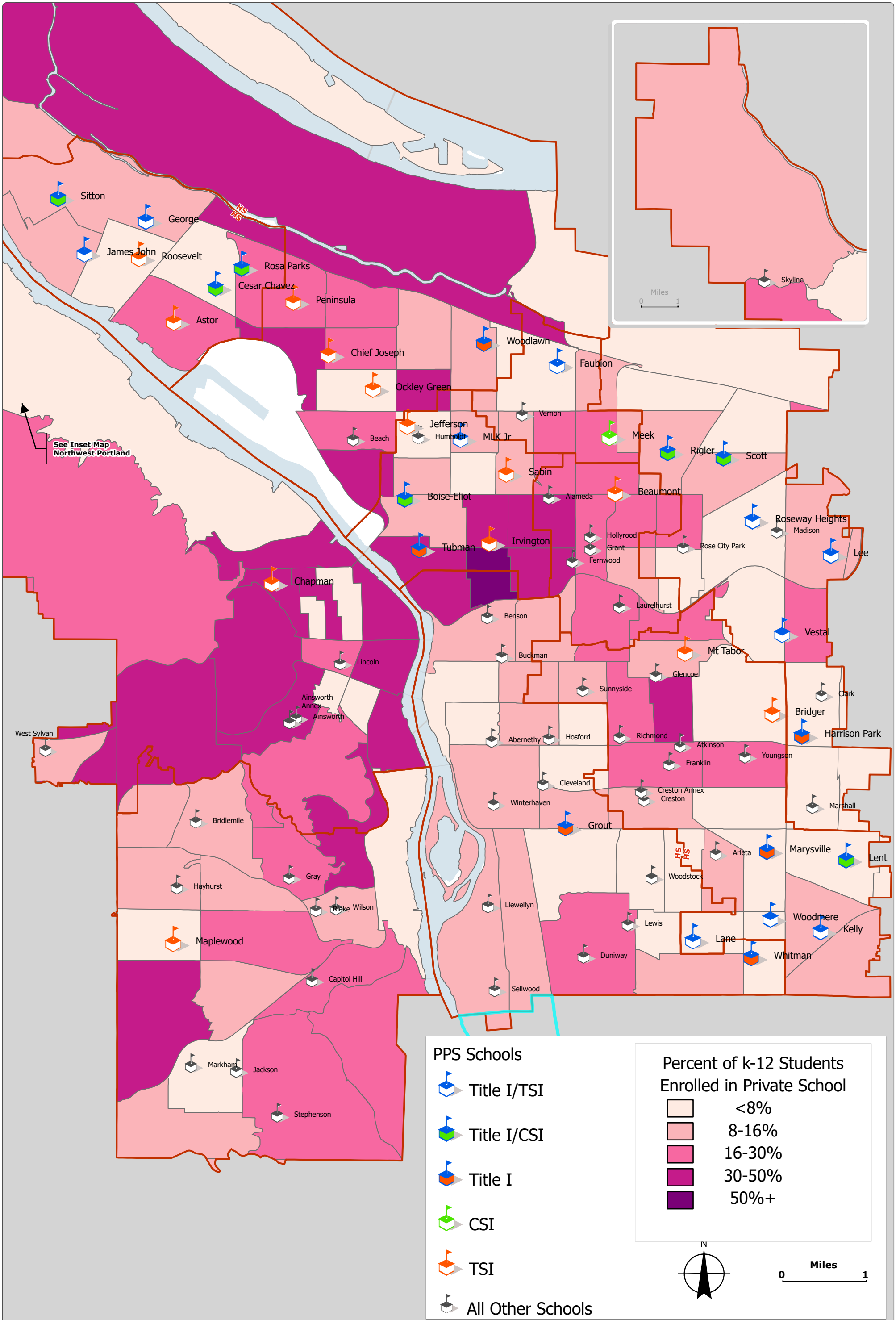
HOUSEHOLD INCOME

Percent of Children Below Federal Poverty Level



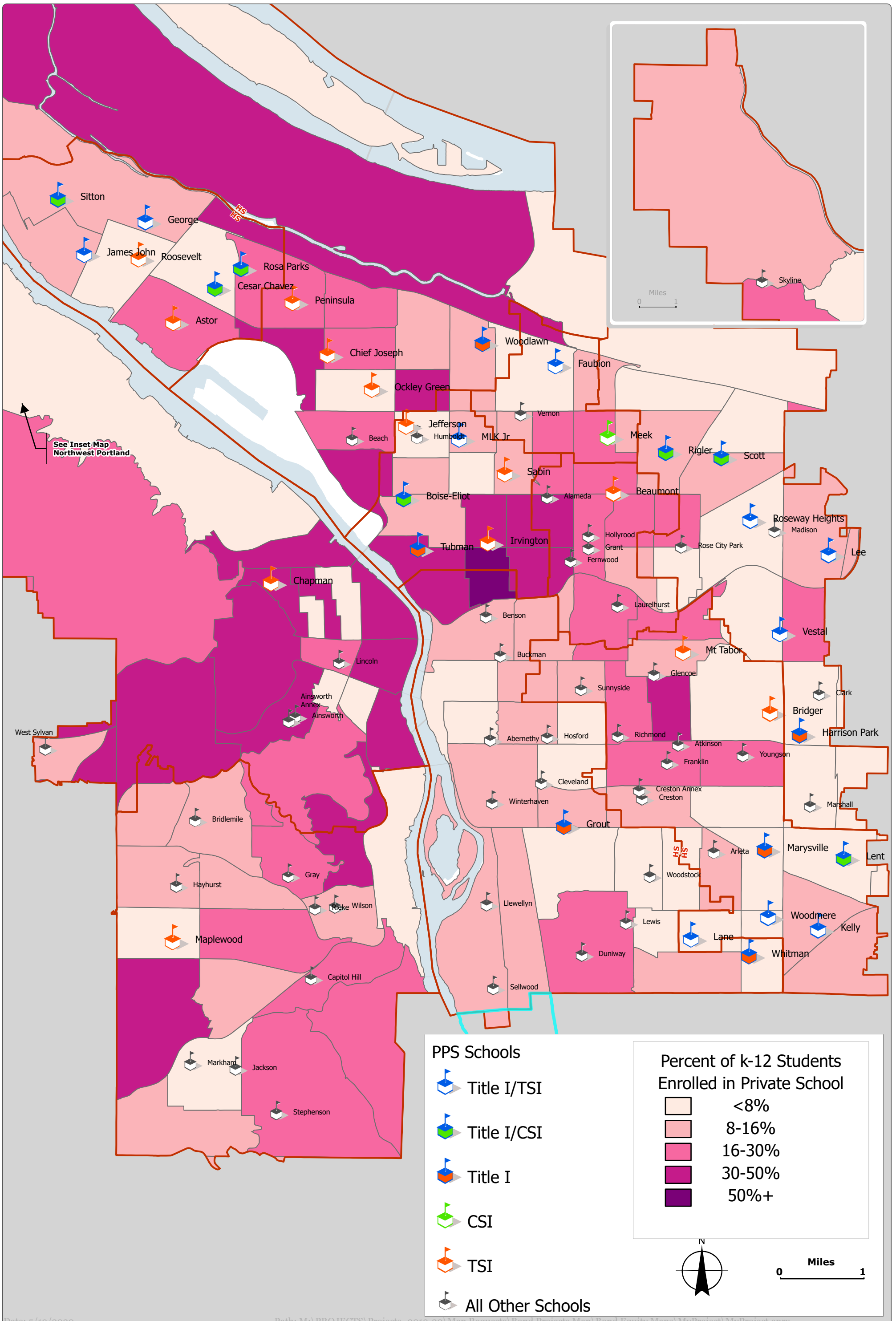


Percent of K-12 Students Attending Private School





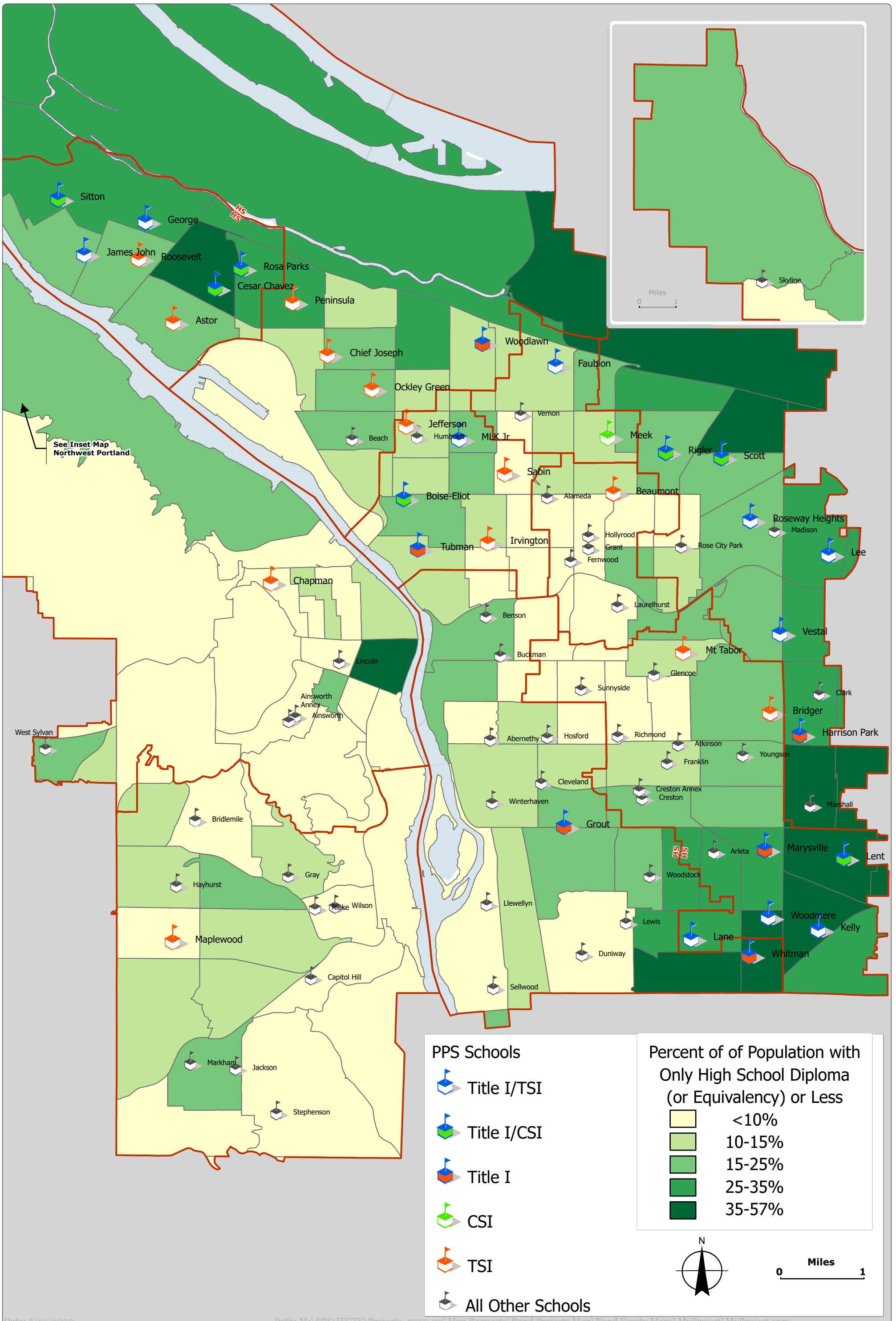
Percent of K-12 Students Attending Private School





ADULTS OVER 25 YEARS BY EDUCATIONAL ATTAINMENT

Percent of Population with a High School Diploma or Less





Percent of Population with No Health Insurance Coverage

